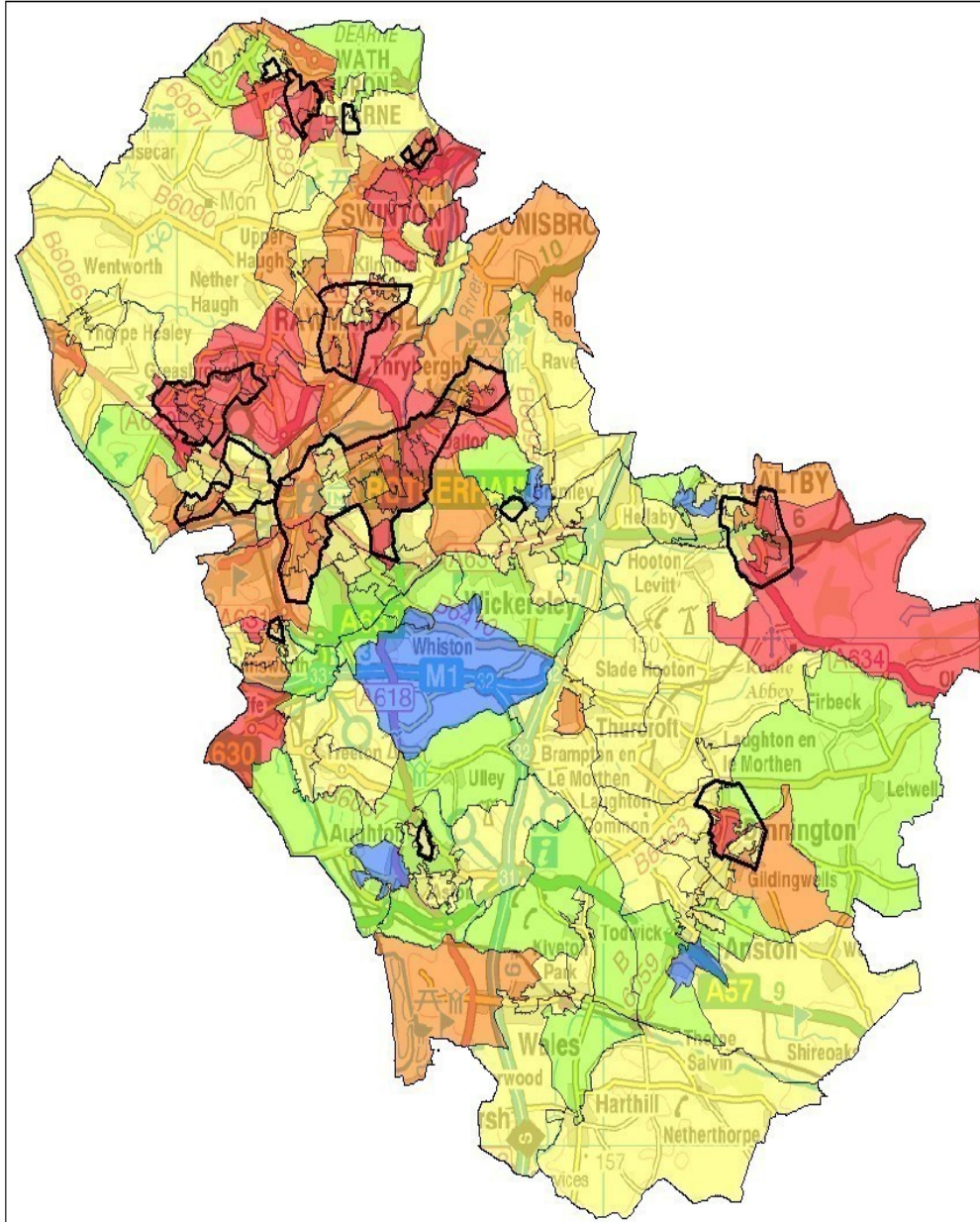


# Median Household Income by Super Output Area



Neighbourhood Renewal Target Areas Shown

Source - Acxiom 2005

Household Income in £

Blue	28,000 to 36,300	(7)
Light Green	24,000 to 28,000	(24)
Yellow	18,400 to 24,000	(66)
Orange	15,600 to 18,400	(34)
Red	8,800 to 15,600	(35)

\* All rights in this data belong to Acxiom UK Ltd and may not be used or reproduced without the express permission of Acxiom UK Ltd.